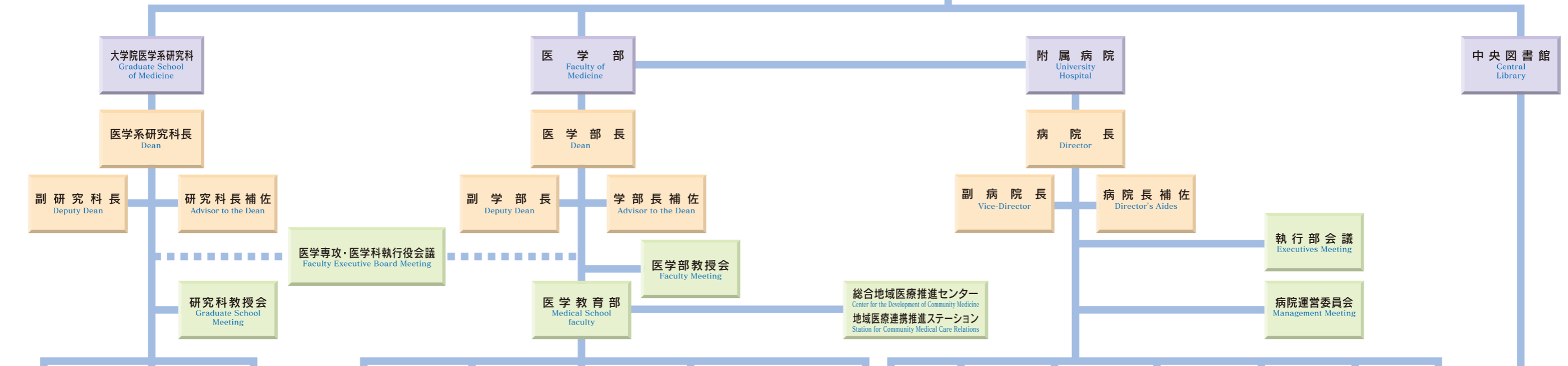


秋田大学
Akita University



医学専攻 Doctoral Course in Medicine	
系 Division	講座名 Department
病態制御 医学系 Bioregulatory Medicine	形態解析学・器官構造学,細胞生物学,細胞生理学,器官病態学,分子機能学・代謝機能学,生体防御学,内分泌・代謝・老年内科学,総合診療・検査診断学,麻酔・蘇生・疼痛管理学,放射線医学,眼科学,精神科学,微生物学,救急・集中治療医学 Department of Anatomy, Department of Cell Biology and Morphology, Department of Cell Physiology, Department of Cellular and Organ Pathology, Department of Biochemistry and Metabolic Science, Department of Immunology, Department of Endocrinology, Diabetes and Geriatric Medicine, Department of General Medical Practice and Laboratory Diagnostic Medicine, Department of Anesthesia and Intensive Care Medicine, Department of Radiology, Department of Ophthalmology, Department of Neuropsychiatry, Department of Medical Biology, Department of Emergency and Critical Care Medicine
腫瘍制御 医学系 Oncoregulatory Medicine	分子生化学,分子病態学・腫瘍病態学,消化器内科学・神経内科学,血液・腎臓・膠原病内科学,消化器外科学,呼吸器・乳腺内分泌外科学,腎泌尿器科学,臨床腫瘍学,地域がん包括医療学 Department of Molecular Medicine and Biochemistry, Department of Molecular Pathology and Tumor Pathology, Department of Gastroenterology and Neurology, Department of Hematology, Nephrology, and Rheumatology, Department of Gastroenterological Surgery, Department of Chest, Breast and Endocrine Surgery, Department of Urology, Department of Clinical Oncology, Department of Comprehensive Cancer Control.
機能展開 医学系 Organ Function- Oriented Medicine	器官・統合生理学,心臓血管外科学,整形外科,皮膚科学・形成外科学,耳鼻咽喉科・頭頸部外科学,脳神経外科学,循環器内科学・呼吸器内科学,情報制御学・実験治療学,小児科学,産婦人科学,小児外科学 Department of Neurophysiology, Department of Cardiovascular Surgery, Department of Orthopedic Surgery, Department of Dermatology and Plastic Surgery, Department of Otorhinolaryngology- Head and Neck Surgery, Department of Neurosurgery, Department of Cardiovascular and Respiratory Medicine, Department of Biological Informatics and Experimental Therapeutics, Department of Pediatrics, Department of Obstetrics and Gynecology, Department of Pediatric Surgery
社会環境医学系 Public Health and Environmental Medicine	法医学,環境保健学,公衆衛生学,医学教育学,地域医療政策学,医療情報学 Department of Health and Forensic Sciences, Department of Environmental Health Sciences, Department of Public Health, Department of Medical Education, Department of Health Care Policy, Department of Medical Informatics.

保健学専攻 Doctoral Course in Health Sciences	
講座名 Department	
基礎看護学 Basic Nursing	
臨床看護学 Clinical Nursing	
母子看護学 Maternity Child Nursing	
地域・老年看護学 Community and Elderly Nursing	
理学療法学 Physical Therapy	
作業療法学 Occupational Therapy	

医学部 Faculty of Medicine	
医学教育部 Medical School faculty	
寄附講座 Endowed Departments	
総合地域医療推進学講座 (H20.10.1~H30.3.31) Community Medicine and Primary Care Development	
病態代謝栄養学講座 (H22.4.1~H27.3.31) Metabolism and Clinical Nutrition Science	
循環型医療教育システム学講座 (H26.4.1~H31.3.31) Interconnected Medical Education and Support Systems	

総務課 General Affairs Division	消化器内科 Gastroenterology	小児科 Pediatrics	中央検査部 Central Laboratory Division	臨床工学センター Clinical Engineering Center
(研究協力室) Cooperative Research office	神経内科 Neurology	産科婦人科 Obstetrics and Gynecology	中央手術部 Central Operating Division	移植検査センター Center of Histocompatibility and Immunogenetics
企画管理課 Planning-Administration Division	循環器内科 Cardiovascular Medicine	精神科 Psychiatry	中央放射線部 Central Radiology Division	卒後臨床研修センター Center of Post Graduate Clinical Training
(病院整備計画室) Hospital Improvement Project office	呼吸器内科 Respiratory Medicine	整形外科 Orthopedic Surgery	中央材料部 Central Supplying Division	医師キャリア形成支援センター Career Development Center
調達課 Supply Division	血液内科 Hematology	皮膚科 Dermatology	集中治療部 Intensive Care Unit	内視鏡・超音波センター Endoscopy and Ultrasonography Center
(施設管理室) Administration office	腎臓内科 Nephrology	泌尿器科 Urology	救急部 Division of Emergency Medicine	遺伝子医療部 Division of Genetic Counseling
学務課 Educational Affairs Division	リウマチ科 Rheumatology	眼科 Ophthalmology	輸血部 Division of Blood Transfusion	腫瘍情報センター Center for Cancer Registry and Information Services
医事課 Medical Affairs Division	糖尿病・内分泌内科 Diabetes and Endocrinology	耳鼻咽喉科 Otorhinolaryngology	リハビリテーション部 Division of Rehabilitation	相談支援センター Consultation Support Center
(医療サービス室) Medical Service office	老年内科 Geriatric Medicine	放射線診断科 Diagnostic Radiology	医療情報部 Division of Medical Informatics	化学療法部 Division of Cancer Chemotherapy
	消化器外科 Gastroenterological Surgery	放射線治療科 Radiation Oncology	血液浄化療法部 Division of Blood Purification	緩和ケアセンター Palliative Care Center
	呼吸器外科 Chest Surgery	麻酔科 Anesthesiology	中央病歴部 Division of Medical Records	心療センター Psychosomatic Division
	食道外科 Esophageal Surgery	リハビリテーション科 Rehabilitation Medicine	周産母子センター Perinatal Medical Center	救急科 Emergency Medicine
	乳腺・内分泌外科 Breast and Endocrinologic Surgery	腫瘍内科 Clinical Oncology	病理部 Division of Clinical Pathology	栄養管理部 Division of Nutrition Management
	心臓血管外科 Cardiovascular Surgery	救急科 Emergency Medicine	総合診療部 General Clinical Division	医師総合支援センター Medical Doctor Support Center
	脳神経外科 Neurosurgery	歯科口腔外科 Dentistry and Oral Surgery	治験管理センター Pharmaceutical Management Center	腎疾患先端医療センター Center of Advanced Treatment for Kidney Disease
	小児外科 Pediatric Surgery			